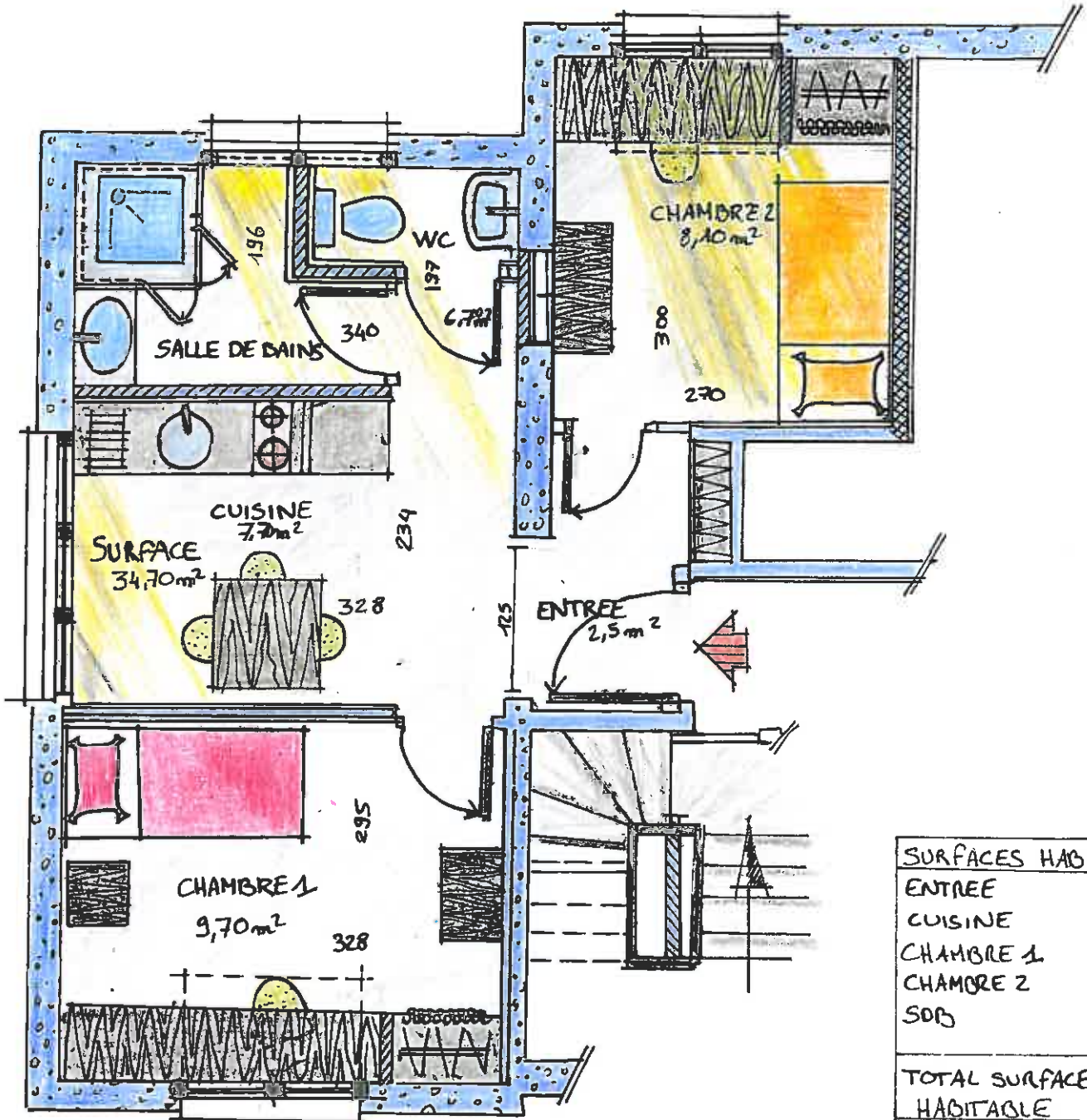
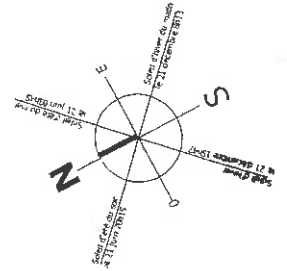


76000 COMMUNE DE ROUEN
 AVENUE DU MONT RIBOUDET TRIANGLE PASTEUR

LOGEMENT F2A



SURFACES HABITABLES	
ENTREE	2,5 m ²
CUISINE	7,70 m ²
CHAMBRE 1	9,70 m ²
CHAMBRE 2	8,10 m ²
SOB	6,7 m ²
TOTAL SURFACE HABITABLE	34,70 m²

PLAN DE L'ETAGE